



**India Meteorological Department  
(Ministry of Earth Sciences)**

**SPECIAL MESSAGE NO. 1 (BOB/05/2023)**

**TIME OF ISSUE:1345 HOURS IST**

**DATED:14.11.2023**

**FROM: INDIA METEOROLOGICAL DEPARTMENT (FAX NO. 24643965/24699216/24623220)**

**TO: CONTROL ROOM, NDM, MINISTRY OF HOME AFFAIRS (FAX.NO. 23093750)**

**CONTROL ROOM NDMA (FAX.NO. 26701729)**

**CABINET SECRETARIAT (FAX.NO.23012284, 23018638)**

**PS TO HON'BLE MINISTER FOR S & T AND EARTH SCIENCES (FAX NO.23316745)**

**SECRETARY, MOES (FAX NO. 24629777)**

**H.Q. (INTEGRATED DEFENCE STAFF AND CDS) (FAX NO. 23005137/23005147)**

**DIRECTOR GENERAL, DOORDARSHAN (23385843)**

**DIRECTOR GENERAL, AIR (23421105, 23421219)**

**PIB MOES (FAX NO. 23389042)**

**UNI (FAX NO. 23355841)**

**D.G. NATIONAL DISASTER RESPONSE FORCE (NDRF) (FAX NO. 26105912, 2436 3260)**

**DIRECTOR, PUNCTUALITY, INDIAN RAILWAYS (FAX NO. 23388503)**

**CHIEF SECRETARY, ODISHA (FAX NO. 0674-2536660)**

**CHIEF SECRETARY, WEST BENGAL (FAX NO. 033-22144328)**

**CHIEF SECRETARY, ANDHRA PRADESH (FAX NO. 0863-2441029, 08645-246600)**

**CHIEF SECRETARY, TAMIL NADU (FAX NO 044-25672304)**

**CHIEF SECRETARY, PUDUCHERRY (FAX NO 0413-2334145)**

**ADMINISTRATOR, ANDAMAN & NICOBAR ISLANDS (FAX NO. 03192- 232656)**

**Sub: Low Pressure Area over southeast Bay of Bengal and adjoining Andaman & Nicobar Islands**

A Low Pressure Area formed over Southeast Bay of Bengal and adjoining Andaman & Nicobar Islands at 0530 hours IST and lay over the same region at 0830 hours IST of today, the 14th November.

It is likely to move west-northwestwards and intensify into a Depression over Westcentral Bay of Bengal on 15th November, 2023. Thereafter, it would move northwestwards and may intensify into a Deep Depression over Westcentral Bay of Bengal off Andhra Pradesh coast on 16th November. Subsequently, it would recurve north-northeastwards and reach Northwest Bay of Bengal off Odisha coast on 17<sup>th</sup> November.

*Forecast track and intensity are given below:*

<b>Date/Time (IST)</b>	<b>Position (Lat. °N/ long. °E)</b>	<b>Maximum sustained surface wind speed (Kmph)</b>	<b>Category of cyclonic disturbance</b>
14.11.23/0830	12.8/90.4	30-40 kmph gusting to 50 kmph	Low Pressure Area
14.11.23/1730	13.4/88.6	35-45 kmph gusting to 55 kmph	Well Marked Low Pressure Area
15.11.23/0530	14.1/86.5	40-50 kmph gusting to 60 kmph	Depression
15.11.23/1730	15.1/85.2	45-55 kmph gusting to 65 kmph	Depression
16.11.23/0530	16.1/84.7	50-60 kmph gusting to 70 kmph	Deep Depression
16.11.23/1730	17.1/85.3	50-60 kmph gusting to 70 kmph	Deep Depression
17.11.23/0530	18.2/86.2	50-60 kmph gusting to 70 kmph	Deep Depression
17.11.23/1730	19.0/87.0	45-55 kmph gusting to 65 kmph	Depression
18.11.23/0530	19.8/87.8	40-50 kmph gusting to 60 kmph	Depression

## **Warnings:**

### **(i) Rainfall Warning (graphics enclosed):**

- Light to moderate rainfall at many places with isolated heavy to very heavy rainfall is very likely over coastal districts of Tamil Nadu & Puducherry on 14<sup>th</sup> and 15<sup>th</sup> November and isolated extremely heavy rainfall is very likely on 14<sup>th</sup> November.
- Light to moderate rainfall at many places with isolated heavy rainfall is likely over coastal districts of Andhra Pradesh on 14<sup>th</sup> & 15<sup>th</sup> November
- Light to moderate rainfall at a few places is likely over coastal districts of Odisha & West Bengal on 15<sup>th</sup> November. It would increase becoming light to moderate rainfall at many places with isolated heavy rainfall is likely over coastal districts of Odisha & West Bengal on 16<sup>th</sup> & 17<sup>th</sup> November and isolated very heavy rainfall over coastal districts of Odisha on 16<sup>th</sup> November,
- Light to moderate rainfall at many places with isolated heavy rainfall is likely over Nagaland, Manipur, Mizoram & Tripura during 16<sup>th</sup> to 18<sup>th</sup> November and over south Assam and east Meghalaya on 17<sup>th</sup> November

### **(ii) Wind warning (graphics enclosed):**

- **Squally weather** with wind speed reaching **35-45 kmph gusting to 55 kmph** is likely to prevail over southwest Bay of Bengal along & off Tamil Nadu & Puducherry and Sri Lanka coasts on 14<sup>th</sup> & 15<sup>th</sup> November.
- **Squally weather** with wind speed reaching **35-45 kmph gusting to 55 kmph** is likely to prevail over southeast Bay of Bengal and adjoining Andaman Sea & eastcentral Bay of Bengal on 14<sup>th</sup> November.
- **Squally wind** speed reaching **45-55 kmph gusting to 65 kmph** is likely over westcentral and adjoining south Bay of Bengal on 15<sup>th</sup> November and likely to become **50-60 kmph gusting to 70 kmph** over westcentral Bay of Bengal on 16<sup>th</sup> November and over northwest and adjoining westcentral Bay of Bengal on 17<sup>th</sup> November.
- **Along & off North Andhra Pradesh Coast: Squally wind speed reaching 40-50 kmph gusting 60 kmph** is likely on 15<sup>th</sup> & 16<sup>th</sup> November.
- **Along & off Odisha Coast: Squally wind speed reaching 40-50 kmph gusting 60 kmph** is likely during 15<sup>th</sup> evening. It is likely to increase gradually becoming **45-55 kmph gusting to 65 kmph** from 16<sup>th</sup> morning, **50-60 kmph gusting 70 kmph** from 16<sup>th</sup> evening for subsequent 24 hours.
- **Along & off West Bengal Coast: Squally wind speed reaching 40-50 kmph gusting 60 kmph** is likely during 16<sup>th</sup> morning. It is likely to increase gradually becoming **50-60 kmph gusting 70 kmph** from 16<sup>th</sup> evening for subsequent 24 hours.
- **Along & off Bangladesh Coast: Squally wind speed reaching 45-55 kmph gusting 65 kmph** is likely from 16<sup>th</sup> evening for subsequent 24 hours.

### **(iii) Sea Condition:**

- **Rough to very rough sea condition** is likely over
  - southwest Bay of Bengal along & off Tamil Nadu & Puducherry and Sri Lanka coasts on 14<sup>th</sup> & 15<sup>th</sup> November.
  - southeast Bay of Bengal and adjoining Andaman Sea & eastcentral Bay of Bengal on 14<sup>th</sup> November.
  - southeast Bay of Bengal and adjoining Andaman Sea & eastcentral Bay of Bengal on 14<sup>th</sup> November.
  - westcentral and adjoining south Bay of Bengal on 15<sup>th</sup> & 16<sup>th</sup> November.
  - North and adjoining westcentral Bay of Bengal on 16<sup>th</sup> & 17<sup>th</sup> November.
  - **Along & off Andhra Pradesh coast** on 15<sup>th</sup> & 16<sup>th</sup> November
  - **Along & off Odisha coast** during 15<sup>th</sup> to 17<sup>th</sup> November.
  - **Along & off West Bengal and Bangladesh coasts** during 16<sup>th</sup> to 18<sup>th</sup> November

**(iv) Fishermen Warning:**

Fishermen are advised not to venture into

Southeast & adjoining eastcentral Bay of Bengal and Andaman Sea during 14<sup>th</sup> and 15<sup>th</sup> November

Southwest Bay of Bengal during 14<sup>th</sup> and 15<sup>th</sup> November

Westcentral Bay of Bengal during 15<sup>th</sup> to 17<sup>th</sup> November

Northwest Bay of Bengal during 16<sup>th</sup> & 17<sup>th</sup> November

Along & off Andhra Pradesh Coast during 15<sup>th</sup> & 16<sup>th</sup> November

Along & off Odisha coast during 15<sup>th</sup> to 17<sup>th</sup> November

Along & off West Bengal coast during 16<sup>th</sup> to 18<sup>th</sup> November

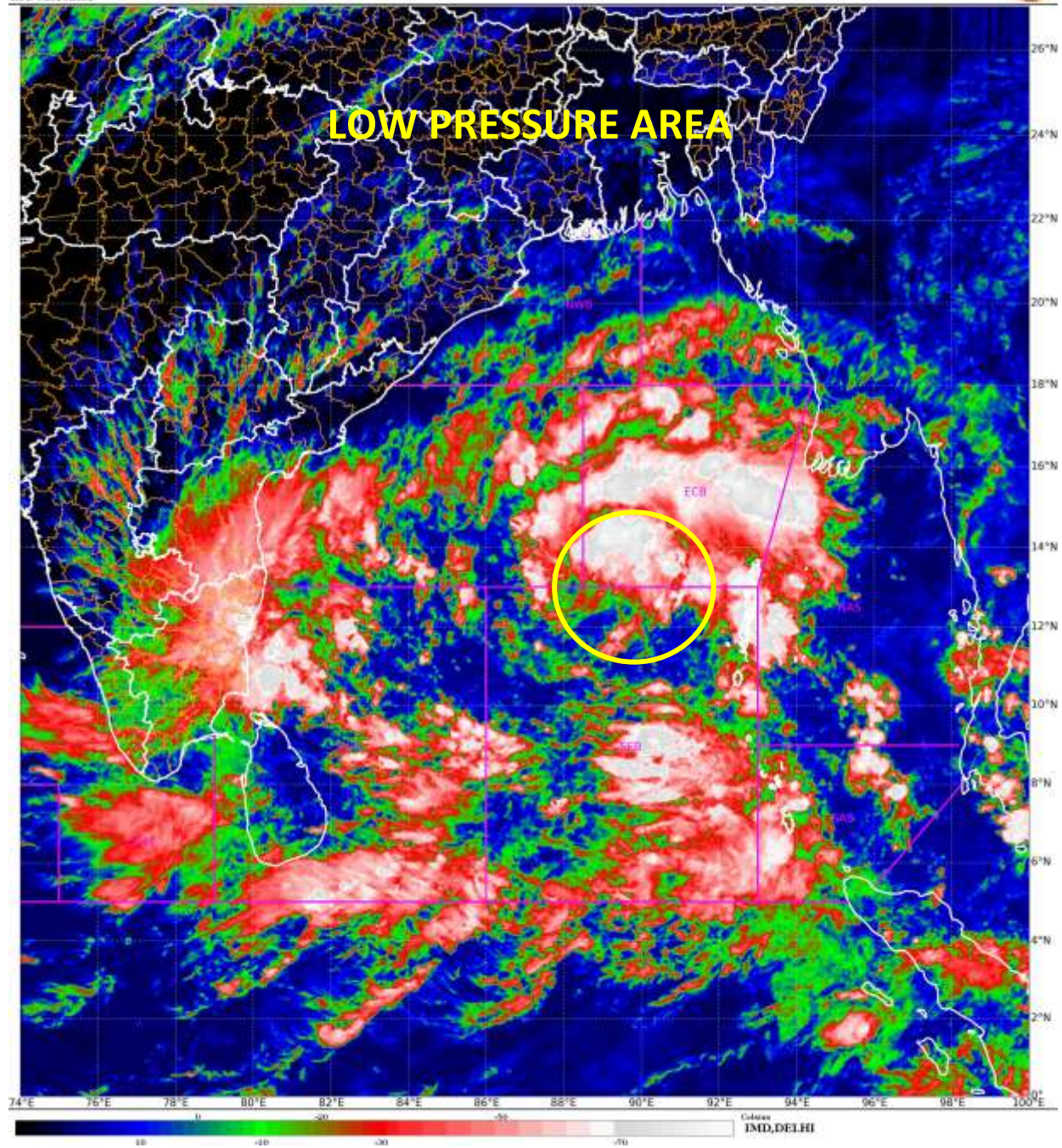
Along & off Bangladesh coast during 16<sup>th</sup> to 18<sup>th</sup> November

The Fishermen out at sea are advised to return to coast by 14<sup>th</sup> November evening.

**The systems is under continuous surveillance and the next message will be issued at 1130 hours IST of tomorrow, the 15<sup>th</sup> November, 2023.**

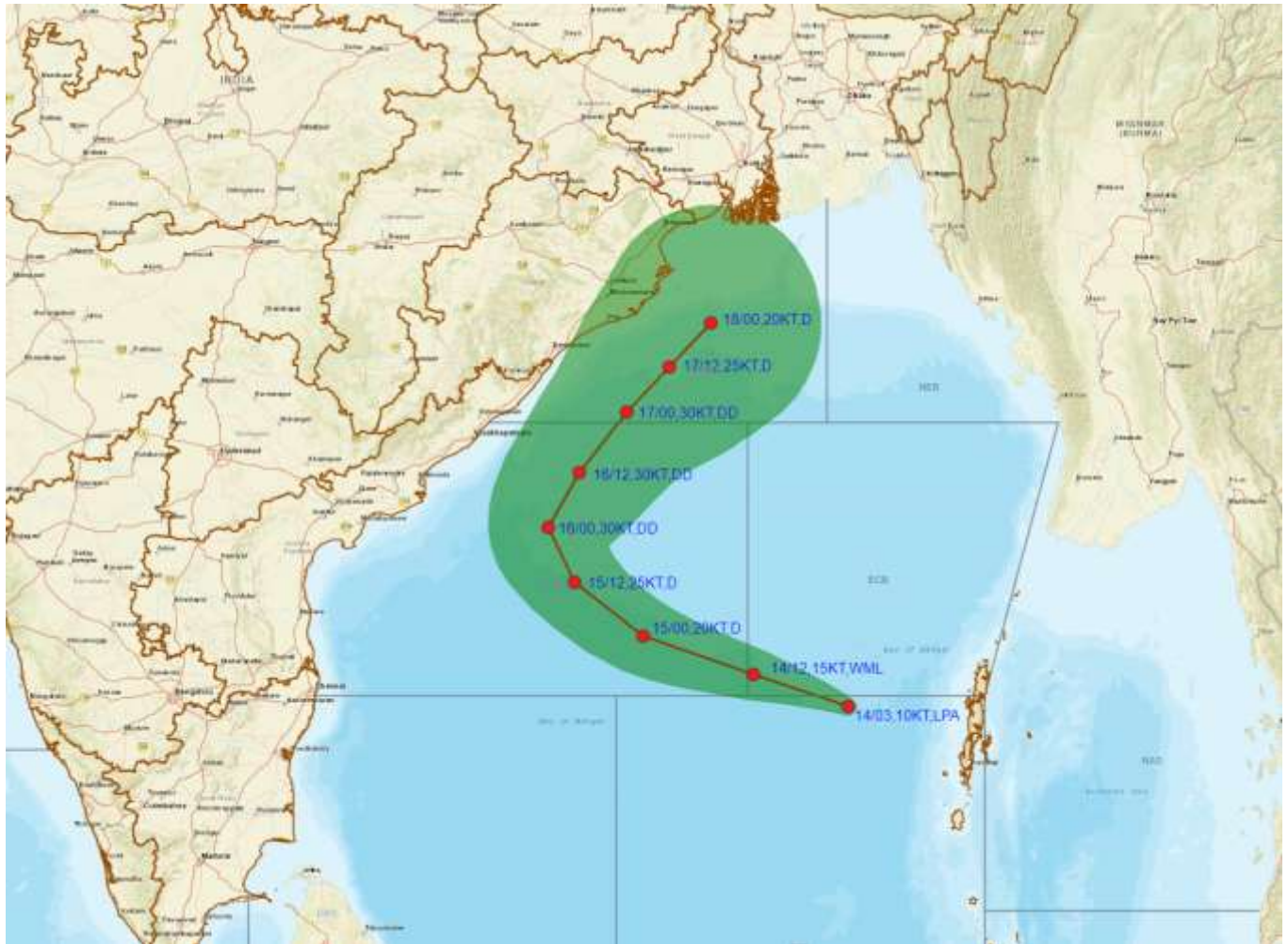
**(Ananda Kumar Das)  
Scientist F, Cyclone Warning, New Delhi**

*Copy to: ACWC Mumbai/ ACWC Chennai/ ACWC Kolkata/CWC Ahmedabad/CWC Bhubaneswar/CWC Vishakhapatnam/CWC Thiruvananthapuram/MC Goa*





**PREGENESIS TRACK FORECAST IN ASSOCIATION WITH LOW PRESSURE AREA OVER SOUTHEAST BAY OF BENGAL AND ADJOINING ANDAMAN & NICOBAR ISLANDS BASED ON 0300 UTC (0830 IST) OF 14<sup>TH</sup> NOVEMBER 2023.**



DATE/TIME IN UTC  
IST=UTC + 0530  
L: LOW PRESSURE AREA  
WML: WELL MARKED LOW PRESSURE AREA  
D: DEPRESSION (17-27 KT)  
DD: DEEP DEPRESSION (28-33 KT)  
CS: CYCLONIC STORM (34-47 KT)  
SCS: SEVERE CYCLONIC STORM (48-63KT)  
VSCS: VERY SEVERE CYCLONIC STORM (64-89 KT)  
ESCS: EXTREMELY SEVERE CYCLONIC STORM (90-119 KT)  
SuCS: SUPER CYCLONIC STORM ( $\geq$  120 KT)

- LESS THAN 34 KT
- 34-47 KT
- $\geq$  48 KT
- OBSERVED TRACK
- FORECAST TRACK
- CONE OF UNCERTAINTY



**PREGENESIS TRACK FORECAST IN ASSOCIATION WITH LOW PRESSURE AREA OVER SOUTHEAST BAY OF BENGAL AND ADJOINING ANDAMAN & NICOBAR ISLANDS BASED ON 0300 UTC (0830 IST) OF 14<sup>TH</sup> NOVEMBER 2023.**



DATE/TIME IN UTC

IST=UTC + 0530

L: LOW PRESSURE AREA

WML: WELL MARKED LOW PRESSURE AREA

D: DEPRESSION (17-27 KT)

DD: DEEP DEPRESSION (28-33 KT)

CS: CYCLONIC STORM (34-47 KT)

SCS: SEVERE CYCLONIC STORM (48-63KT)

VSCS: VERY SEVERE CYCLONIC STORM (64-89 KT)

ESCS: EXTREMELY SEVERE CYCLONIC STORM (90-119 KT)

SuCS: SUPER CYCLONIC STORM (≥20 KT)

● LESS THAN 34 KT

○ 34-47 KT

● ≥ 48 KT

— OBSERVED TRACK

— FORECAST TRACK

▲ CONE OF UNCERTAINTY

AREA OF MAXIMUM SUSTAINED WIND SPEED:

■ 28-33 KT (52-61 KMPH)

■ 34-49 KT (62-91 KMPH)

■ 50-63 KT (92-117 KMPH)

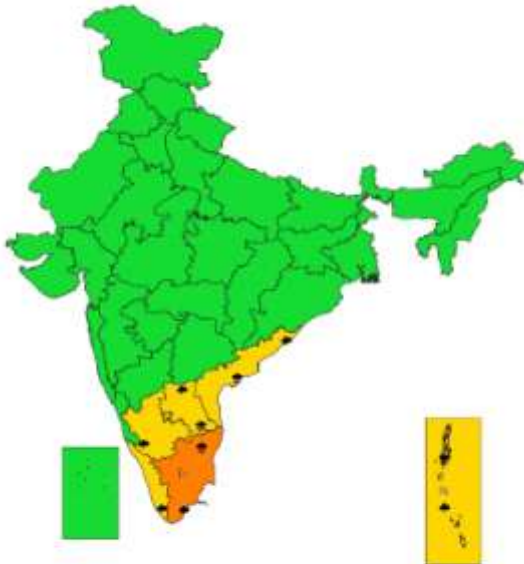
■ ≥ 64 KT (≥118 KMPH)

**IMPACT OVER THE SEA**

MSW (knot/kmph)	Impact	Action
28-33 (52-61)	Very rough seas	Total suspension of fishing operations
34-49 (62-91)	High to very high seas	Total suspension of fishing operations
50-63 (92-117)	Very high seas	Total suspension of fishing operations
≥ 64 (≥118)	Phenomenal	Total suspension of fishing operations



**SUBDIVISIONWISE WEATHER WARNING FOR DAY 1  
( 14-11-2023 )**



- |                             |                        |                          |
|-----------------------------|------------------------|--------------------------|
| <b>Subdivision Warning</b>  | ☁ Dust Storm           | <b>Subdivision color</b> |
| ☔ Heavy Rain                | 🌪 Strong Surface Winds | 🟢 NO WARNING             |
| ❄ Heavy Snow                | 🌡 Heat Wave            | 🟡 WATCH (BE UPDATED)     |
| ⚡ Thunderstorms & Lightning | ❄ Cold wave            | 🟠 ALERT (BE PREPARED)    |
| 🌪 Hailstorm                 | 🌫 Fog                  | 🔴 WARNING (TAKE ACTION)  |

**WARNING**

<b>WARNING (TAKE ACTION)</b>
<b>ALERT ( BE PREPARED )</b>
<b>WATCH (BE UPDATED)</b>
<b>NO WARNING ( NO ACTION )</b>



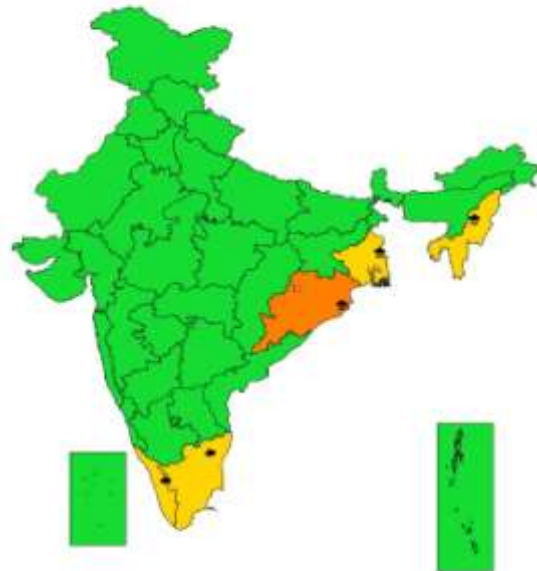
**SUBDIVISIONWISE WEATHER WARNING FOR DAY 2  
( 15-11-2023 )**



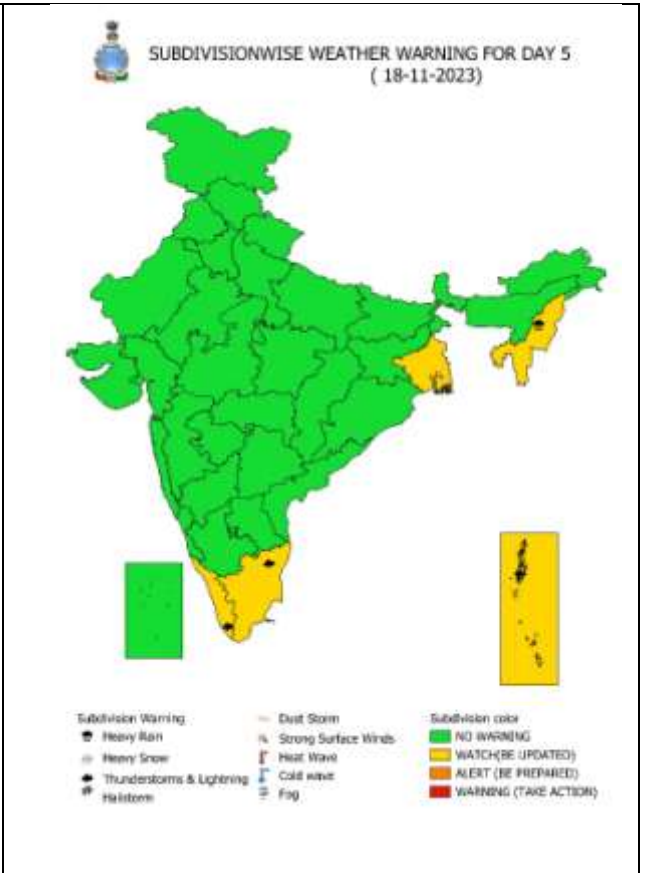
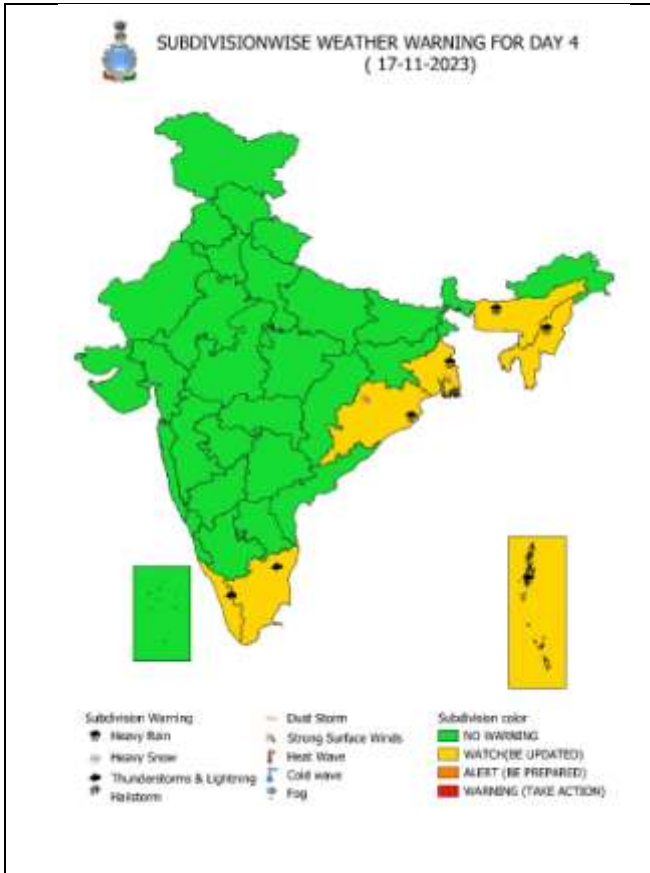
- |                             |                        |                          |
|-----------------------------|------------------------|--------------------------|
| <b>Subdivision Warning</b>  | ☁ Dust Storm           | <b>Subdivision color</b> |
| ☔ Heavy Rain                | 🌪 Strong Surface Winds | 🟢 NO WARNING             |
| ❄ Heavy Snow                | 🌡 Heat Wave            | 🟡 WATCH (BE UPDATED)     |
| ⚡ Thunderstorms & Lightning | ❄ Cold wave            | 🟠 ALERT (BE PREPARED)    |
| 🌪 Hailstorm                 | 🌫 Fog                  | 🔴 WARNING (TAKE ACTION)  |



**SUBDIVISIONWISE WEATHER WARNING FOR DAY 3  
( 16-11-2023 )**



- |                             |                        |                          |
|-----------------------------|------------------------|--------------------------|
| <b>Subdivision Warning</b>  | ☁ Dust Storm           | <b>Subdivision color</b> |
| ☔ Heavy Rain                | 🌪 Strong Surface Winds | 🟢 NO WARNING             |
| ❄ Heavy Snow                | 🌡 Heat Wave            | 🟡 WATCH (BE UPDATED)     |
| ⚡ Thunderstorms & Lightning | ❄ Cold wave            | 🟠 ALERT (BE PREPARED)    |
| 🌪 Hailstorm                 | 🌫 Fog                  | 🔴 WARNING (TAKE ACTION)  |



☁ **Heavy Rain**

🌪 **Strong Winds**

SS **Frost**

❄ **Heavy Snow**

👁 **Visibility**

🌡 **Cold Wave**

⚡ **Thunderstorm**

🌀 **Cyclone**

🔥+ **Heat Wave**

🌪 **Dust Storm**

☁ **Squall/ Hail**

🌊 **Sea State**



## Fishermen warning graphics

Day 1: 14.11.2023/11:30AM to 15.11.2023/05:30AM



Day 2: 15.11.2023/05:30AM to 16.11.2023/05:30AM



Day 3: 16.11.2023/05:30AM to 17.11.2023/05:30AM



Day 4: 17.11.2023/05:30AM to 18.11.2023/05:30AM



Day 5: 18.11.2023/05:30AM to 19.11.2023/05:30AM



Squally WX with wind speed 40-45 kmph gusting to 55 kmph

Squally WX with wind speed 45-55 kmph gusting to 65 kmph

Squally wind with speed 50-60 kmph gusting to 70 kmph

**Fishermen are advised not to venture into the marked areas.**